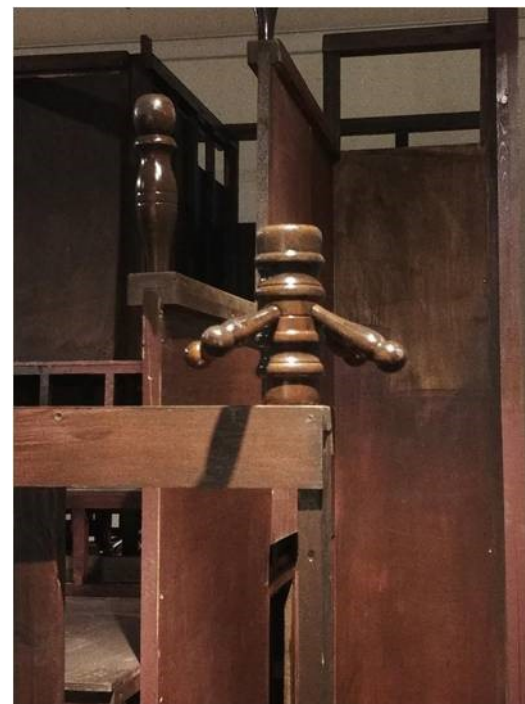


Kyoung Jae Cho

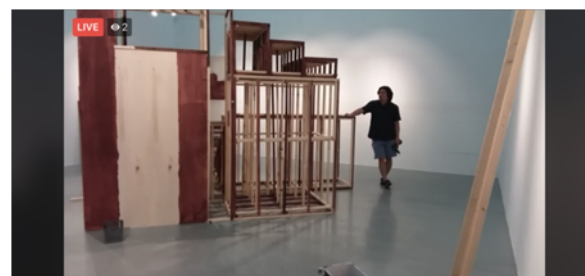


YeoJwa Headquarters, SeMA warehouse, 2020



YeoJwa Headquarters, Changwon Sculpture Biennale 2020



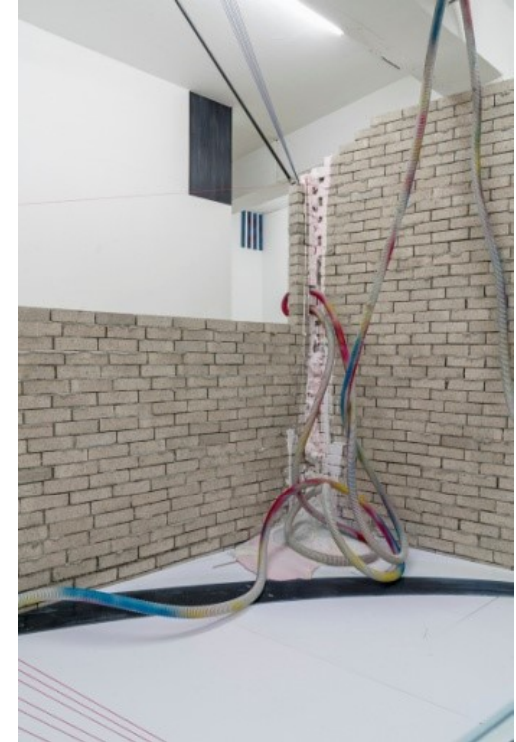


Live Rooftop: Yeojwa Headquarters II 전시전경, IAP Warehouse Gallery, 2020



Broken Edges, Mixed media, 600x500x400cm, 2016





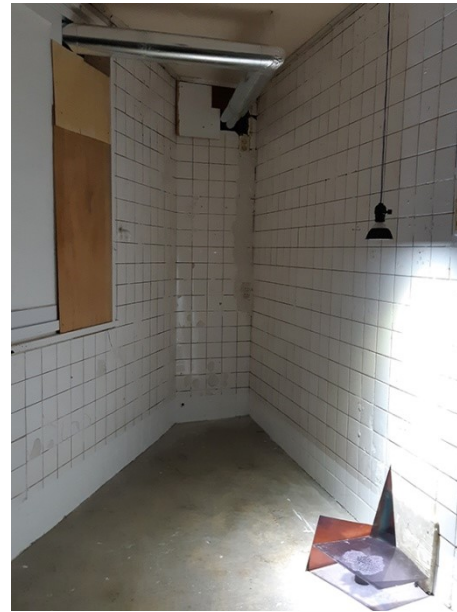
Broken Edges, Mixed media, 600x500x400cm, 2016

《Broken Edges》(2017) is an exhibition held at project space SARUBIA. The exhibition consists of an installation and photographs. Taking the anxious and tension-provoking characteristics of urban space as its motif, the exhibition seeks a heavy and strong yet flexible and improvisational sensitivity. To this end he employs bricks, wood and steel pipes that are laid across various surfaces and spaces, changing SARUBIA's rectangular space into amorphous one. Hung here and there across the exhibition space the photographs taken by the artist, by juxtaposing everyday objects becomes elements that comprise the space. Freely moving around the amorphous space constructed by various objects that function as formal elements like points, lines, and planes, the audience visually experiences the space which dramatically changes depending on various perspectives. The audience's experiences are translated into two-dimensional photographs taken by multiple viewpoints, communicated and spread through social networks services online. Pictures taken and posted online by the audience show how the artist's installation shots, actual composition of exhibition space, and installation exhibition can expand through the experience of the audience.



White, , Mixed media, 2019



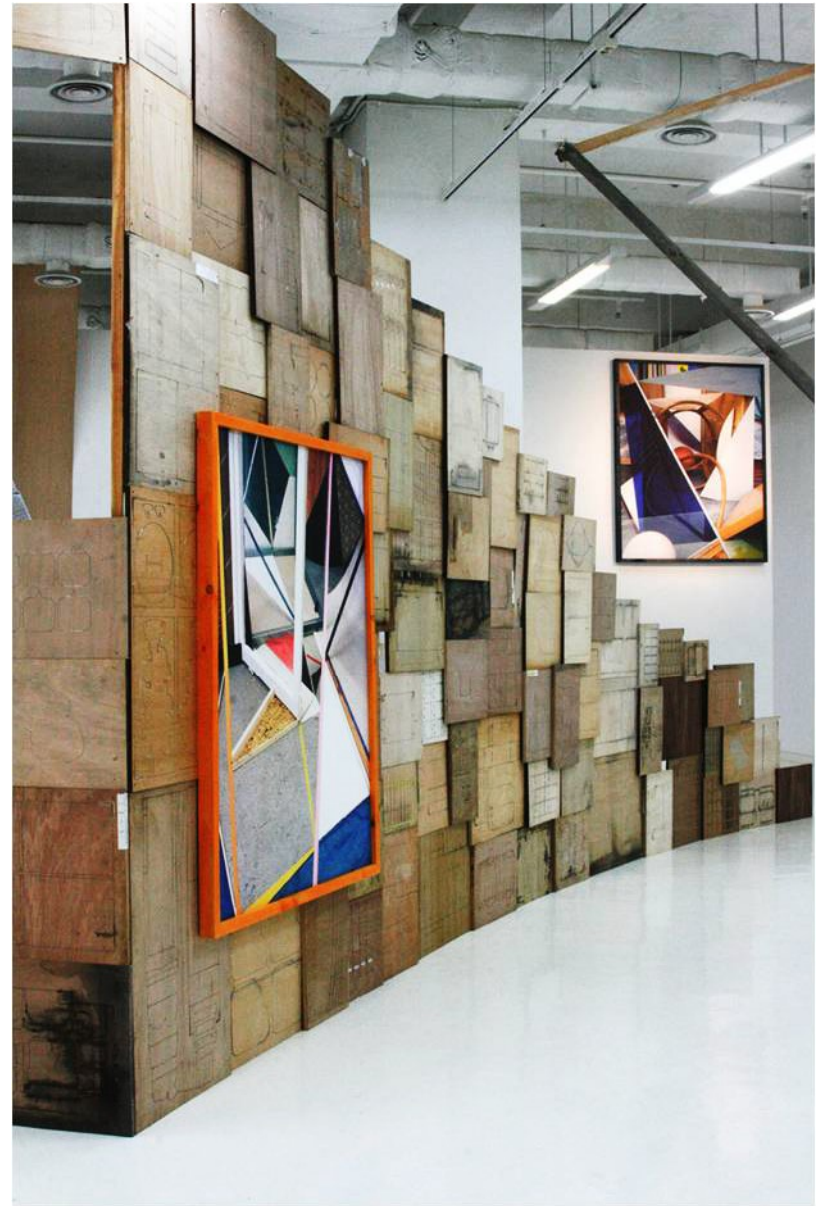


The Reveal of Tooth Pulp, Amado art space, Seoul, 2018





The Reveal of Tooth Pulp, Amado art space, Seoul, 2018

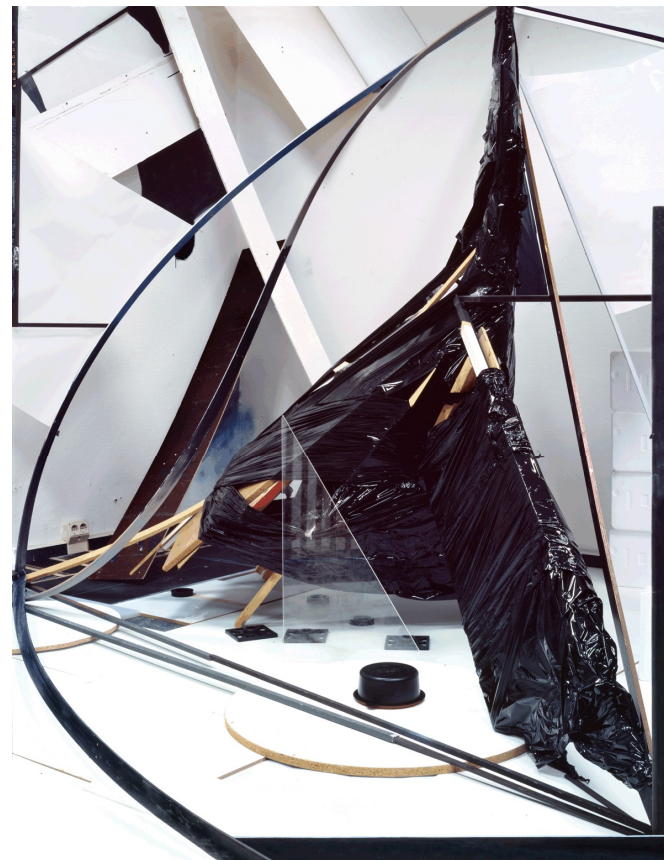


5.5, Mixed media, 600x500x400cm, 2016



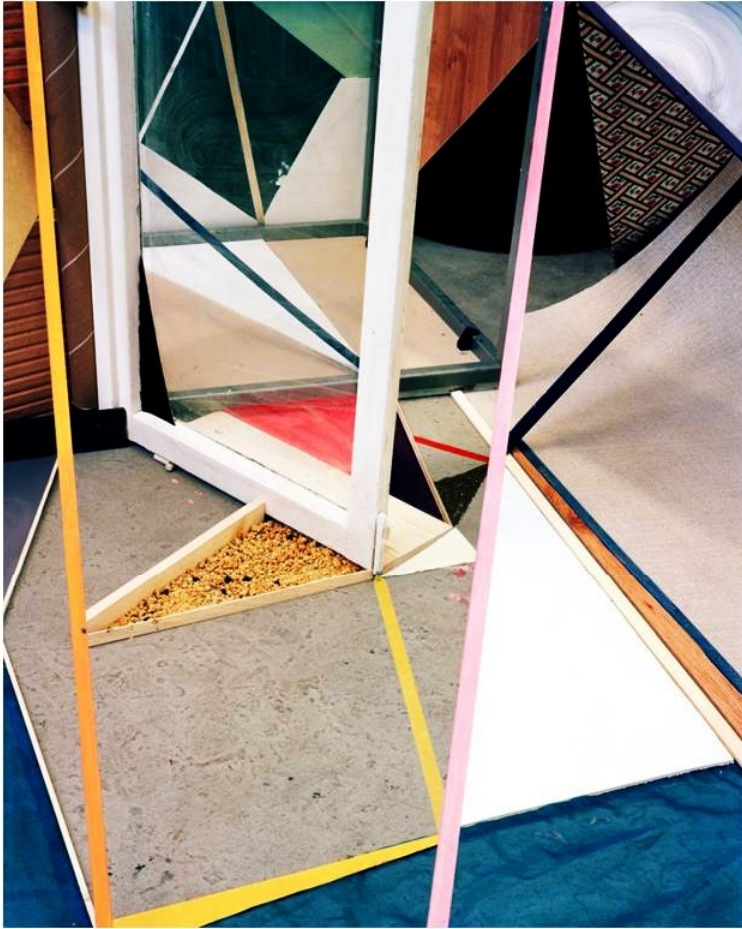


SADARI, photography , Inkjet Print, 180x150cm, 2016



Q4, photography , Inkjet Print, 180x150cm, 2016





Klasse04-008



WT 004,

Inkjet Print, 160x128cm, 2013

He designs the actual space within the view created through the camera lens to resemble an abstract painting and records the process through taking pictures. Having concentrated on the condition, coloring and texture of manufacturing materials that we commonly have access to, such as lumber, iron plates, plastics and styrofoam, he manipulates these materials within the actual space, as it would be done with the touch of a brush or coloring, and designs a different space utilizing the materials in a fashion unrelated to their original function or use. After checking the display within the viewfinder, the actual image is then manipulated once to make corrections. This process is then repeated until the product is complete.

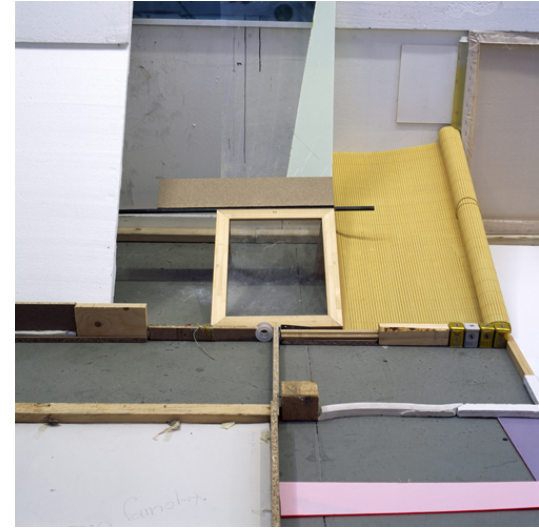


SY 001, SY002, photography , Inkjet Print, 2019



Blue cheese, photography , Inkjet Print, 120x120cm, 2017





photography , Inkjet Print, 100x100cm, 2011-2



Nanji openstudio, Seoul, 2018





Mega Bock, Mixed media, 250x250x400cm, 2017





Unespace transformé, Mixed media, Goethe Institut Paris, 2018  
blue chesse, Schierke Seinecke Gallery, Frankfurt am Main, Germany 2019



Black cow, Mixed media, 700x700x350, 2016





Block Block, Mixed media, 900x500x500cm, 2014  
 □ ▵ 002, Mixed media, 700x450, 2012



Goeun photo Museum, Busan 2020